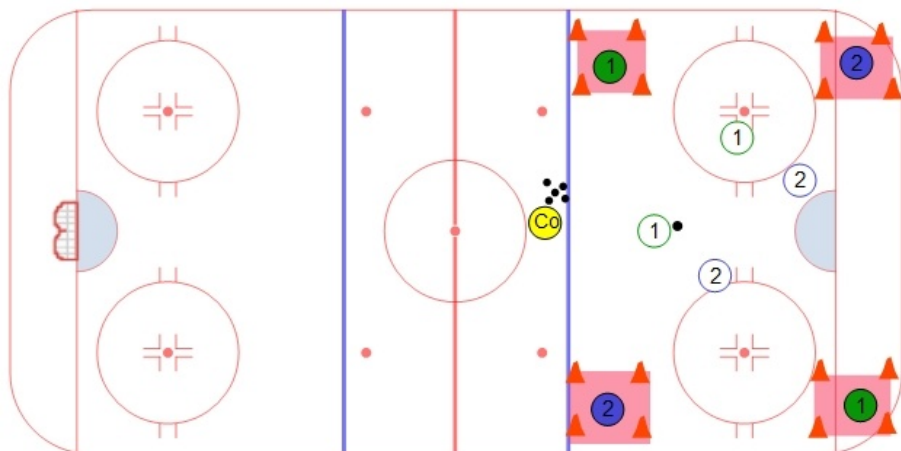


# Four Corners



Notes / Coaching Points

## Description

This is a possession game with 4 players on each team and can be set up in any of the zones. To set up, mark out 4 squares as shown in the diagram. Each square will have a player from one of the teams and the player is not allowed to leave that square. The two other players from each team will play 2 vs 2. Everytime they make a pass to their teammate inside their square they will get a point. The pass must be received cleanly inside the square. A team can maintain possession for as long as they want and collect as many points as they want until the other team intercepts or takes the puck away. A coach should be stationed just outside the zone with pucks. Anytime a puck goes outside the zone the puck will play a new puck into space so players can battle for a loose puck.